



# Certificate of Analysis

OFFICIAL CALIFORNIA REGULATORY SAMPLE

1 of 2

**PASSED AS CALIFORNIA INDUSTRIAL HEMP**

ICAL ID: H 20210818-001  
Sample: CA210818-008-042  
Sample Name: BD-21-002  
Cultivar: Cherry 308  
Category: Plant  
Retest: No

Registrant: Lawrence Drewry

Registration # 32-210040G  
ldrewry@bud-dfarms.com  
40105 Avis Rd., Hemet, CA 92543  
GPS Coordinates: 33.680073, -116.960477  
Acreage: 1 acre  
General Description: Site (2) Outdoor  
Sample Collection: 11:15 AM

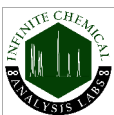


Sampled By: Blake Ferris  
08/17/2021 11:15 AM  
Received By: Colby Lockhart  
08/17/2021 4:00 PM  
Tested By: Susan Andersen  
08/19/2021 1:48 PM

Moisture*	Total THC	Total CBD	Total Cannabinoids
<b>3.3%</b>	<b>0.085%</b>	<b>1.839%</b>	<b>2.017%</b>

## Summary

Test	Method	Date Tested	Result
Cannabinoids	POT-PREP-003 Hemp/Trim	08/19/2021	Pass
Moisture	MOISTURE-001	08/19/2021	Pass



Infinite Chemical Analysis Labs  
8380 Miramar Mall #102  
San Diego, CA  
(858) 623-2740  
www.infiniteCAL.com  
Lic# C8-0000019-LIC

*Josh M Swider*

Josh Swider  
Lab Director, Managing Partner  
08/23/2021

Confident Cannabis  
All Rights Reserved  
support@confidentcannabis.com  
(866) 506-5866  
www.confidentcannabis.com



This product has been tested by Infinite Chemical Analysis Labs, LLC using validated testing methods and a quality control system certified to conform to ISO/IEC 17025:2017 (Accreditation #: 95560). Sample processing and testing was performed in accordance with CDFA California Industrial Hemp Law and Regulations (California Code of Regulations Title 3, Division 4, Chapter 8, Article 2, sections 4942-4945). Infinite Chemical Analysis Labs, LLC makes no claims pertaining to the efficacy, safety, or other risks associated with any detected or non-detected levels of any compounds reported herein. This Certificate shall not be reproduced except in full without the written approval of Infinite Chemical Analysis Labs, LLC.



# Certificate of Analysis

OFFICIAL CALIFORNIA REGULATORY SAMPLE

2 of 2

ICAL ID: H 20210818-001  
Sample: CA210818-008-042  
Cherry 308  
Category: Plant

Registrant  
**Lawrence Drewry**  
Registration # 32-210040G  
40105 Avis Rd.  
Hemet, CA 92543  
ldrewry@bud-dfarms.com

Sampled By: Blake Ferris  
08/17/2021 11:15 AM

Received By: Colby Lockhart  
08/17/2021 4:00 PM

Tested By: Susan Andersen  
08/19/2021 1:48 PM

## Cannabinoid Profile

Analyte	LOQ	LOD	%	mg/g	Analyte	LOQ	LOD	%	mg/g
THCa	0.006	0.002	0.048	0.48	CBDV	0.002	0.001	ND	ND
Δ9-THC	0.004	0.001	0.042	0.42	CBN	0.003	0.001	ND	ND
Δ8-THC	0.002	0.001	ND	ND	CBGa	0.005	0.002	0.042	0.42
THCV	0.002	0.001	ND	ND	CBG	0.003	0.001	0.020	0.20
CBDa	0.007	0.002	1.381	13.81	CBC	0.010	0.003	0.025	0.25
CBD	0.003	0.001	0.458	4.58	<b>Total</b>			<b>2.017</b>	<b>20.17</b>

Total THC = THCa \* 0.877 + d9-THC; Total CBD = CBDa \* 0.877 + CBD. NR = Not Reported, ND = Not Detected. Potency is reported on a dry weight basis. Instrumentation and analysis SOPs used: Cannabinoids: UHPLC-DAD(POT-INST-005), Moisture: Moisture Analyzer (MOISTURE-001). The measurement of uncertainty for total THC concentration is ± 0.009%.



Infinite Chemical Analysis Labs  
8380 Miramar Mall #102  
San Diego, CA  
(858) 623-2740  
www.infiniteCAL.com  
Lic# C8-0000019-LIC

*Josh M Swider*

Josh Swider  
Lab Director, Managing Partner  
08/23/2021

Confident Cannabis  
All Rights Reserved  
support@confidentcannabis.com  
(866) 506-5866  
www.confidentcannabis.com



This product has been tested by Infinite Chemical Analysis Labs, LLC using validated testing methods and a quality control system certified to conform to ISO/IEC 17025:2017 (Accreditation #: 95560). Sample processing and testing was performed in accordance with CDFA California Industrial Hemp Law and Regulations (California Code of Regulations Title 3, Division 4, Chapter 8, Article 2, sections 4942-4945). Infinite Chemical Analysis Labs, LLC makes no claims pertaining to the efficacy, safety, or other risks associated with any detected or non-detected levels of any compounds reported herein. This Certificate shall not be reproduced except in full without the written approval of Infinite Chemical Analysis Labs, LLC.